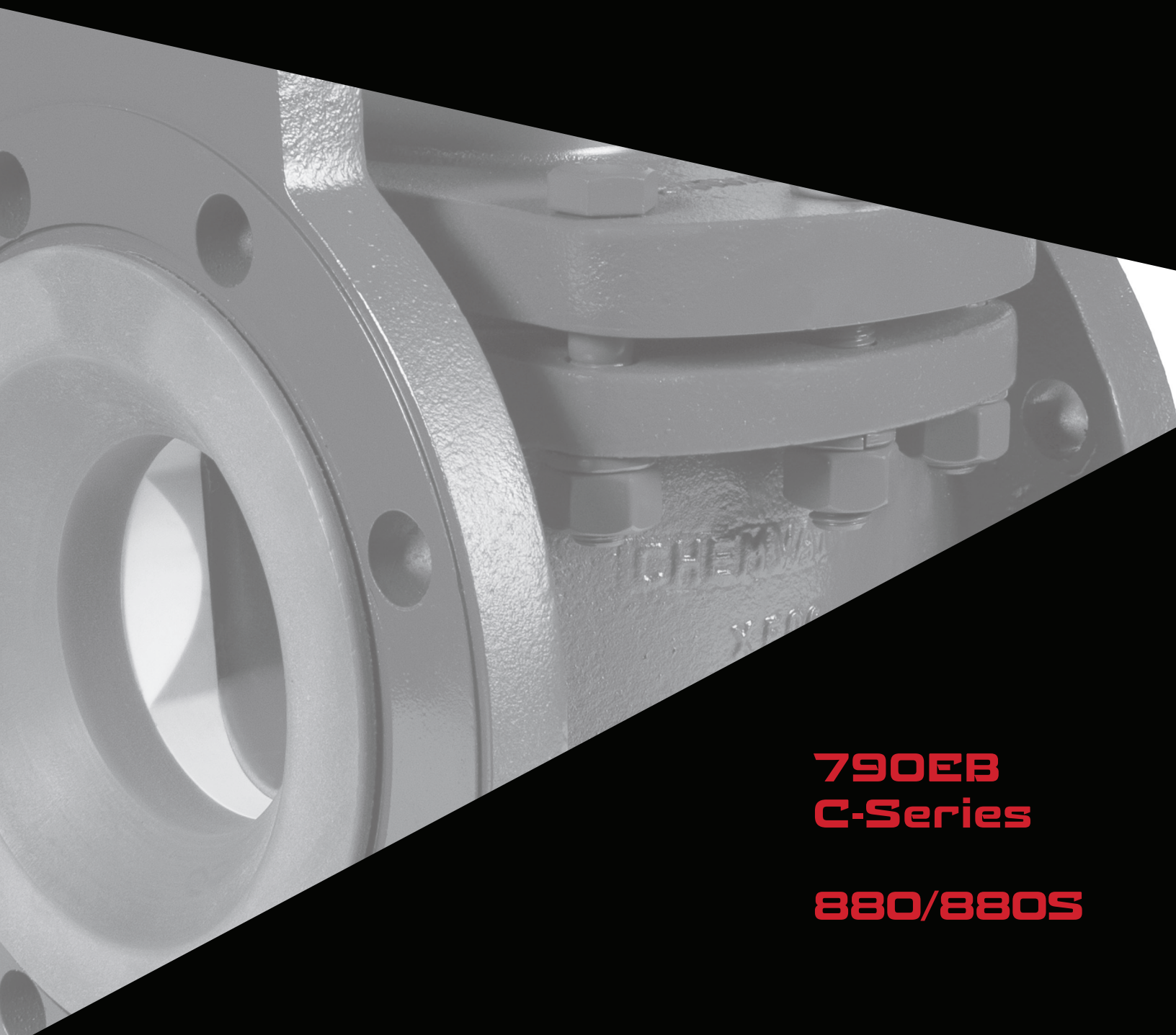




# **ChemValve**

Fully Lined Plug and Ball Check Valves



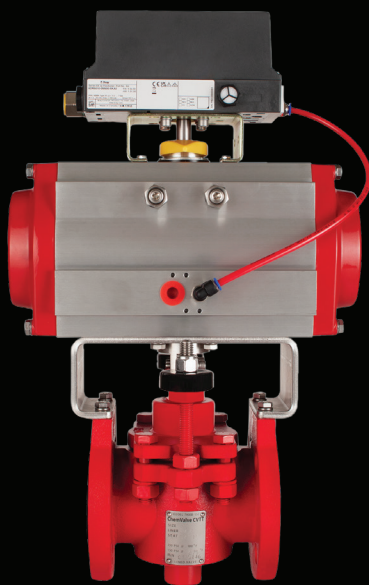
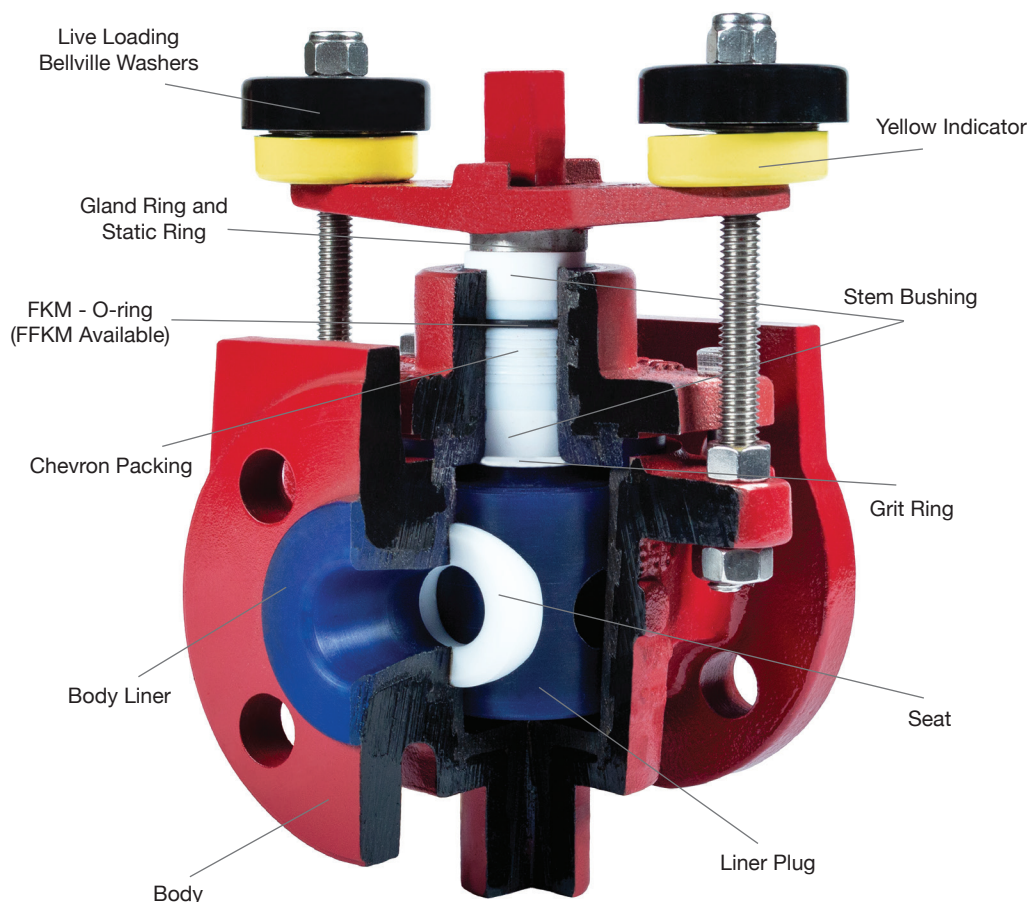
**790EB  
C-Series**

**880/880S**

# Model 790EB C-Series

## Fully Customizable Lined Plug Valve

- **Sizes:** 1" to 8"  
(up to 6" in 300#)
- **Pressure Class:**  
150#, 300#
- **Body Materials:**  
Ductile iron - ASTM  
A395 Gr 60-40-18  
316SS - ASTM A351  
CF8M  
Carbon Steel - ASTM  
A216 WCB
- **End Connections:** RF, FF
- **Replaceable Seats:**  
PTFE, TFM, GRTFM
- **Low Operating Torques**
- **Extended Bonnet with  
Chevron Packing and FKM  
or FFKM O-ring**
- **Custom designs :**  
Double Block and Bleed,  
3-Way, Automation
- **Control Valves with CV seats**

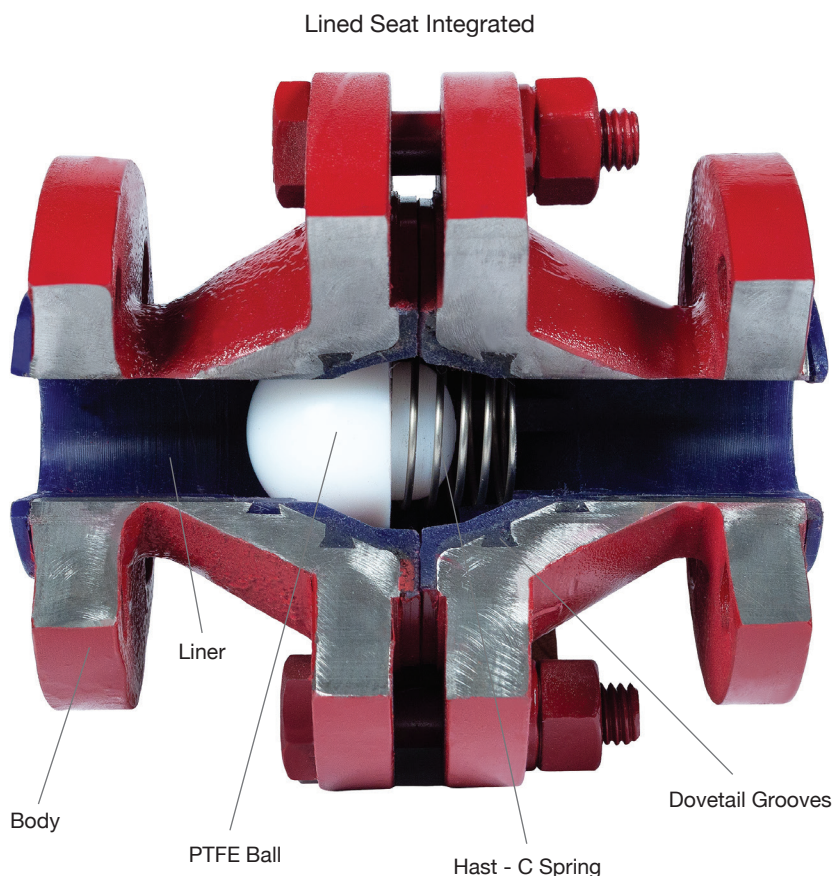


► Liner descriptions on back



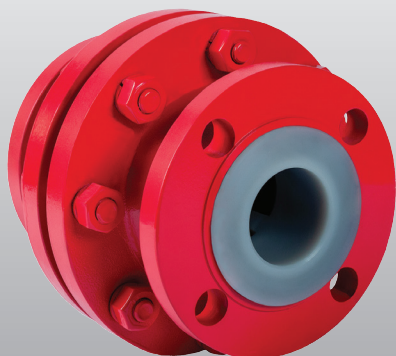
# Model 880/880S

## High Performance Lined Ball Check Valve



- Sizes: 1" to 8"  
(up to 6" in 300#)
- Pressure Class:  
150#, 300#
- Body Materials:  
Ductile iron - ASTM A395  
Gr 60-40-18  
316SS - ASTM A351  
CF8M  
Carbon Steel - ASTM  
A216 WCB
- Model 880 - no spring  
for vertical installations
- Model 880s - spring  
assisted for vertical or  
horizontal installations
- Spring options:  
customized cracking  
pressure, Hastelloy-C  
276, Hast B, Titanium,  
encapsulated
- Machined Dovetail  
Grooves
- Solid PTFE Ball

150# 880/S with GRPFA Liner



### SPECIFICATIONS

#### Industry Standards:

ASME B16.34 (WCB/CF8M)  
ASME B16.42 (Ductile iron)  
ASME B16.10 Face-to-face Dimensions<sup>1</sup>  
ASME B16.5 Flanged Ends

#### Testing Capability:

Leak testing per manufacturer's standard  
Leak testing per API 598  
Leak testing per AAR Specification  
M1002 (railcar valves)  
Liner integrity electrostatic discharge  
to 40KV

<sup>1</sup>Model 790 Plug Valves; Model 880 Lined Ball Check  
Valves comply with manufacturer's requirements.



Liner descriptions on back



# ChemValve

Fully Lined Plug and Ball Check Valves

## 790 VALVE CUSTOMIZATIONS

- Prep for Chlorine Service
- Drilling and Tapping
- Tagging
- Epoxy paint, custom colors and coatings
- Locking Handle
- Seat Notching
- Gear Operators
- Test/Certifications
- Chain-Wheel Operator
- Anti-Corrosion Coating
- Special Materials for Fasteners

## SERVING INDUSTRY LEADERS FOR 30+ YEARS

With over 30 years of experience manufacturing custom flow solutions in a diverse range of applications, our installation base has grown to include industry leaders across a wide variety of markets. We thank those customers who have chosen ChemValve to provide them with fully lined valves over all these years. As a leader in the valve industry, we continue to pursue our goal of providing high performance solutions and excellent customer service.

## VALVE LINERS

### PPL - Polypropylene

- Excellent corrosion resistance in ambient temperature applications
- AAR approved for 37% HCl tank cars and also used in waste-water treatment facilities
- Max service temperature: 225°F

### PVDF - KYNAR®

- Excellent chemical resistance, thermal stability and erosion resistance
- Applications include chlorine/halogen and brine
- Max service temperature: 275°F

### PFA - Perfluoroalkoxy

- Excellent chemical resistance in high temperature applications
- Commonly found in dilution stations for sulfuric acid
- Max service temperature: 400°F

### GRPFA - Glass Reinforced PFA

- Excellent abrasion and temperature resistance
- Best liner choice for high temperature slurry applications containing solids (sand, glass)
- Max service temperature: 400°F



Manufactured in  
Tomball, Texas

[sales@chemvalve.com](mailto:sales@chemvalve.com) (281) 357-0101 [www.chemvalve.com](http://www.chemvalve.com)

