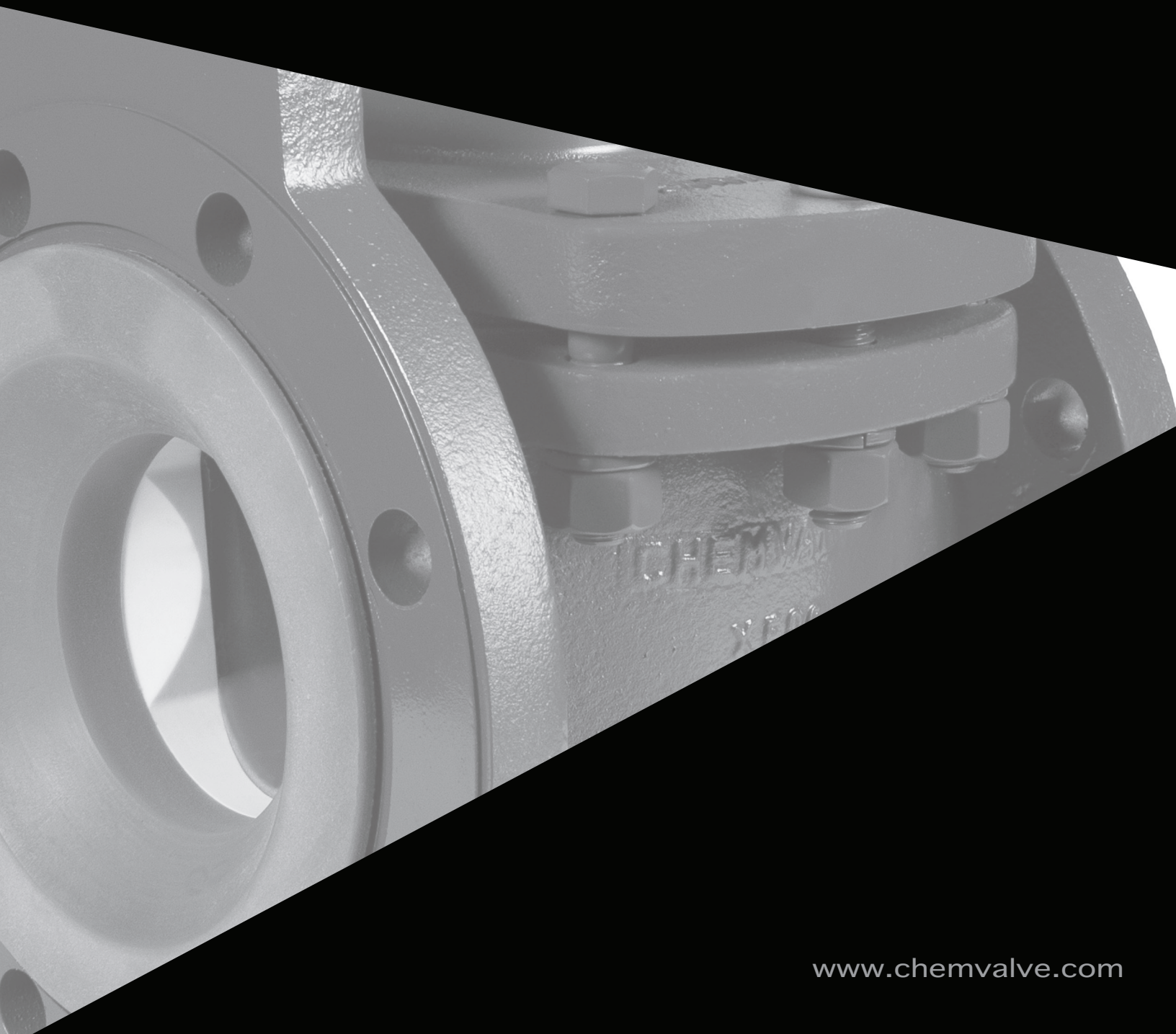




ChemValve

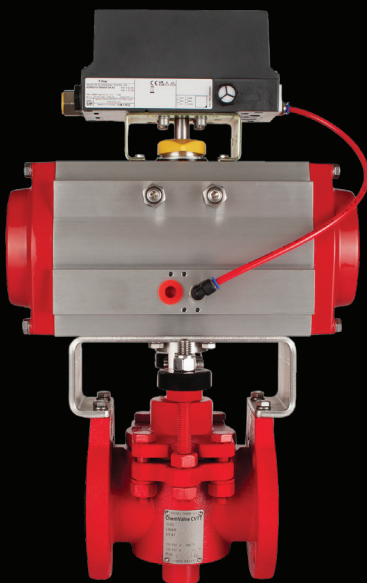
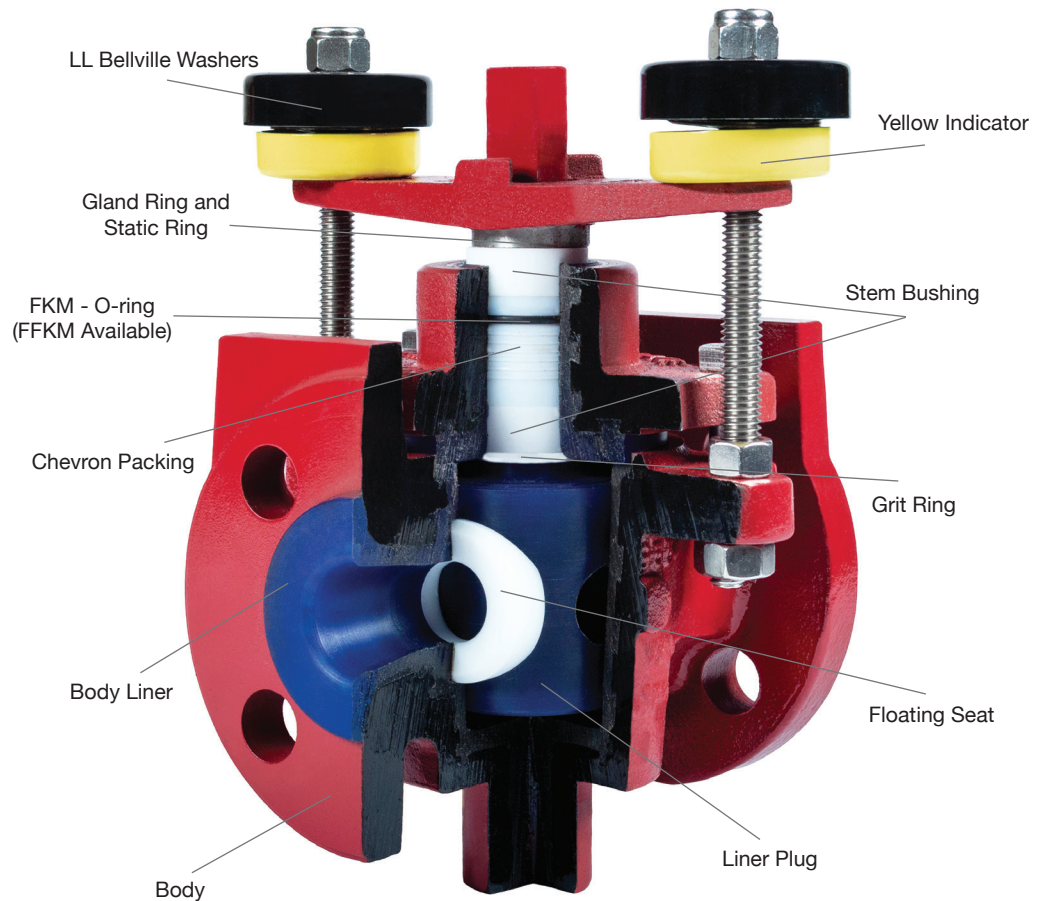
Fully Lined Plug and Ball Check Valves



Model 790 EB

High Performance Lined Plug Valve

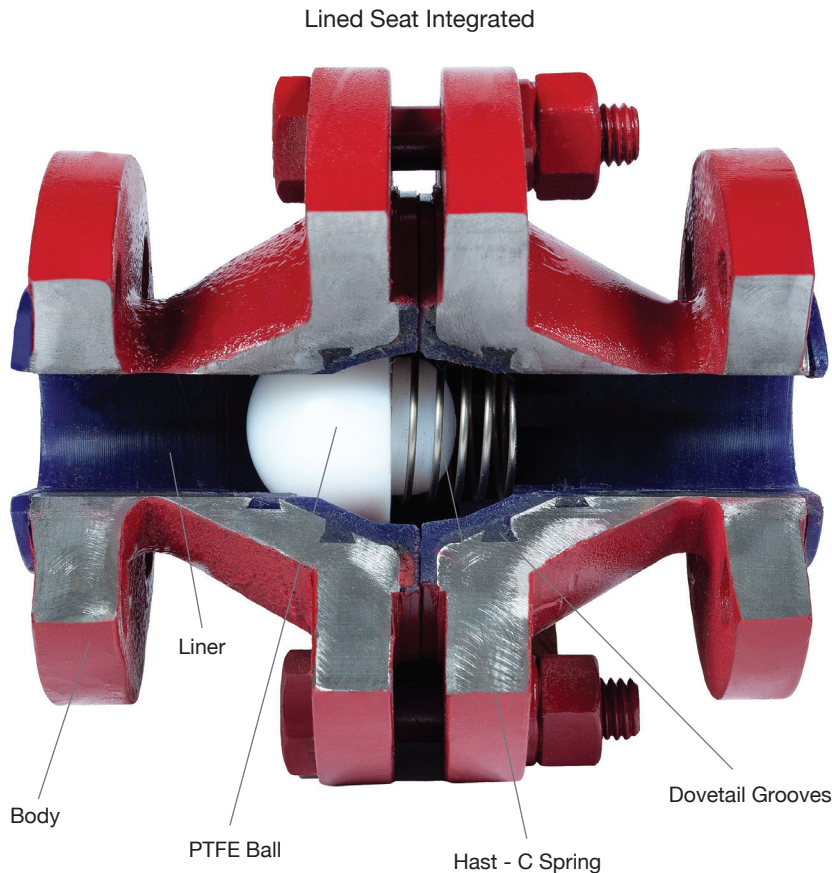
- Sizes: 1" to 8"
(up to 6" in 300#)
- Pressure Class:
150#, 300#
- Body Materials:
Ductile iron - ASTM
A395 Gr 60-40-18
316SS - ASTM A351
CF8M
Carbon Steel - ASTM
A216 WCB
- End Connections: RF, FF
- Replaceable Seats:
PTFE, TFM, GRTFM
- Low Operating Torques
- Extended Bonnet with
Chevron Packing and FKM
or FFKM O-ring
- Custom designs : DBB,
3-Way, Automation
- Control Valves with CV seats



► Liner descriptions on back

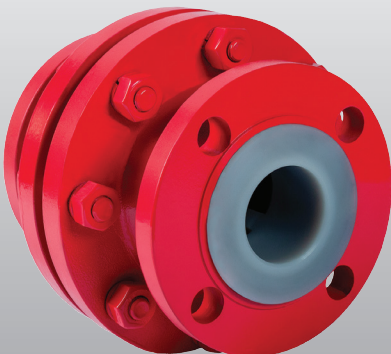
Model 880/88S

High Performance Lined Ball Check Valve



- Sizes: 1" to 8"
(up to 6" in 300#)
- Pressure Class:
150#, 300#
- Body Materials:
Ductile iron - ASTM A395
Gr 60-40-18
316SS - ASTM A351
CF8M
Carbon Steel - ASTM
A216 WCB
- Model 880 - no spring
for vertical installations
- Model 880s - spring
assisted for vertical or
horizontal installations
- Spring options:
customized cracking
pressure, Hastelloy-C
276, Hast B, Titanium,
encapsulated
- Machined Dovetail
Grooves
- Solid PTFE Ball

150# 880/S with GRPFA Liner



SPECIFICATIONS

Industry Standards:

ASME B16.34 (WCB/CF8M)
ASME B16.42 (Ductile iron)
ASME B16.10 Face-to-face Dimensions¹
ASME B16.5 Flanged Ends

Testing Capability:

Leak testing per manufacturer's standard
Leak testing per API 598
Leak testing per AAR Specification
M1002 (railcar valves)
Liner integrity electrostatic discharge
to 40KV

¹Model 790 Plug Valves; Model 880 Lined Ball Check
Valves comply with manufacturer's requirements.



Liner descriptions on back



ChemValve

Fully Lined Plug and Ball Check Valves

VALVE CUSTOMIZATIONS

- Prep for Chlorine Service
- Drilling and Tapping
- Tagging
- Epoxy paint, custom colors and coatings
- Locking Handle
- Seat Notching
- Gear Operators
- Test/Certifications
- Chain-Wheel Operator
- Anti-Corrosion Coating
- Special Materials for Fasteners

SERVING INDUSTRY LEADERS FOR 30+ YEARS

With over 30 years of experience manufacturing custom flow solutions in a diverse range of applications, our installation base has grown to include industry leaders across a wide variety of markets. We thank those customers who have chosen ChemValve to provide them with fully lined valves over all these years. As a leader in the valve industry, we continue to pursue our goal of providing high performance solutions and excellent customer service.

VALVE LINERS

PPL Polypropylene

- Excellent balance of corrosion resistance and economy
- Great for ambient temp applications; max temp 225F
- Often used in water/waste water treatment and approved for 37% HCL applications

PVDF-KYNAR®

- Excellent chemical resistance, thermally stable, good erosion resistance
- Max service temp 275F
- Recommended for chlorine/halogen and abrasive applications

PFA (Perfluoroalkoxy)

- Excellent chemical resistance
- Great for high temp applications; max temp 400F
- Standard liner for many industry applications

GRPFA Glass-Reinforced PFA

- Glass fiber reinforced PFA
- Same chemical and temperature resistance as PFA
- Enhanced erosion resistance



Manufactured in
Tomball, Texas

sales@chemvalve.com (281) 357-0101 www.chemvalve.com

