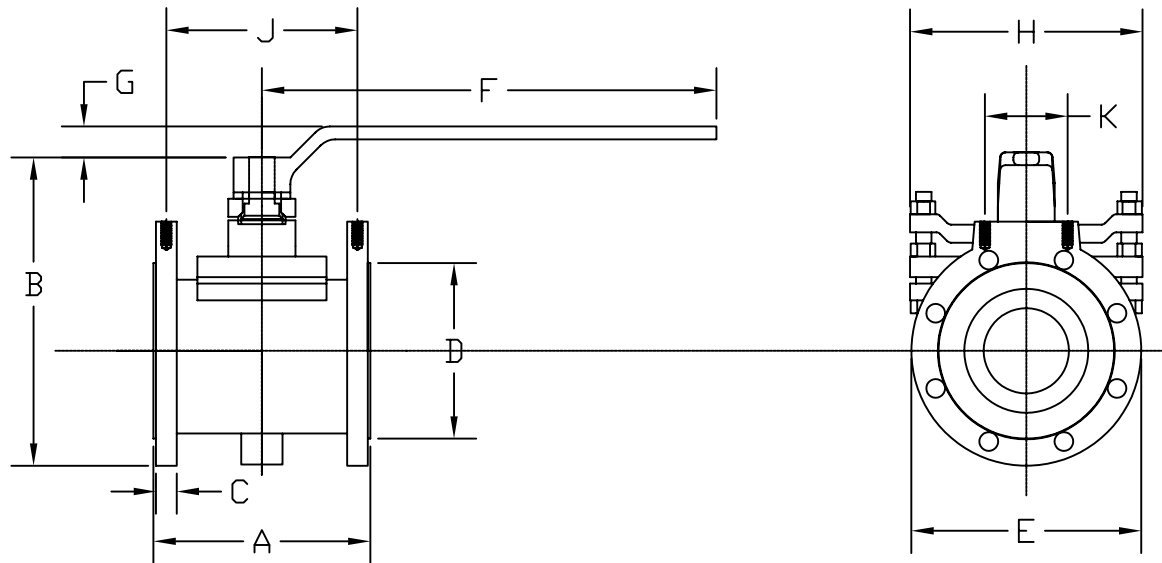


OUTLINE DIMENSIONS OF MODEL 790EB-150 LINED PLUG VALVE



* = TOLERANCE ± 1/16"

** = TOLERANCE ± 0.010"

NOMINAL VALVE SIZE	A*	B*	C*	D*	E*	F*	G*	H*	BOLT HOLE DIAM.	DIAM. BOLT CIRCLE	APPROX. VALVE WEIGHT	MOUNTING PAD			FOUR TAPED HOLES	
												J**	K**	HOLE DIAM.	THREAD	THREAD DEPTH
1"	5.00"	7.13"	0.44"	2.00"	4.25"	10.0"	1.00"	5.63"	5/8"	3 1/8"	13#	4.20"	1.75"	5/16"	18UNC	7/8"
1.5"	6.50"	7.75"	0.56"	2.88"	5.00"	10.0"	1.00"	7.50"	5/8"	3 7/8"	18#	5.63"	1.75"	5/16"	18UNC	1"
2"	7.00"	8.50"	0.63"	3.63"	6.00"	10.0"	1.00"	7.50"	3/4"	4 3/4"	26#	6.00"	2.25"	5/16"	18UNC	1"
3"	8.00"	10.50"	0.75"	5.00"	7.50"	16.0"	0.75"	9.00"	3/4"	6"	47#	6.80"	3.50"	3/8"	16UNC	1 1/8"
4"	9.00"	11.50"	0.94"	6.13"	9.00"	16.0"	0.75"	9.00"	3/4"	7.50"	79#	7.75"	4"	1/2"	13UNC	1 1/8"
6"	10.50"	14.75"	1.00"	8.38"	11.00"	22.0"	1.50"	11.30"	7/8"	9.50"	129#	9.20"	4"	1/2"	13UNC	1 1/8"
8"	11.50"	16.05"	1.13"	10.60"	13.5"	22.0"	1.50"	11.30"	7/8"	11.75"	166#	10.00"	4"	1/2"	13UNC	1 1/8"

This drawing shall not be reproduced, copied, lent, disclosed, published, or disposed of, directly or indirectly, nor used for any purpose other than that for which it was specifically furnished

ChemValve, Inc.
Tomball, Texas

Model Number
790EB-150-OUTLINE DIMENSIONS

Drawn: B.K.

Part Name
790EB-150

Checked:

Approved: B.K.

Drawing Number
79EB15DIM

Date: 3-7-00

Re

No.	Revision	Description	Date	Chk'd