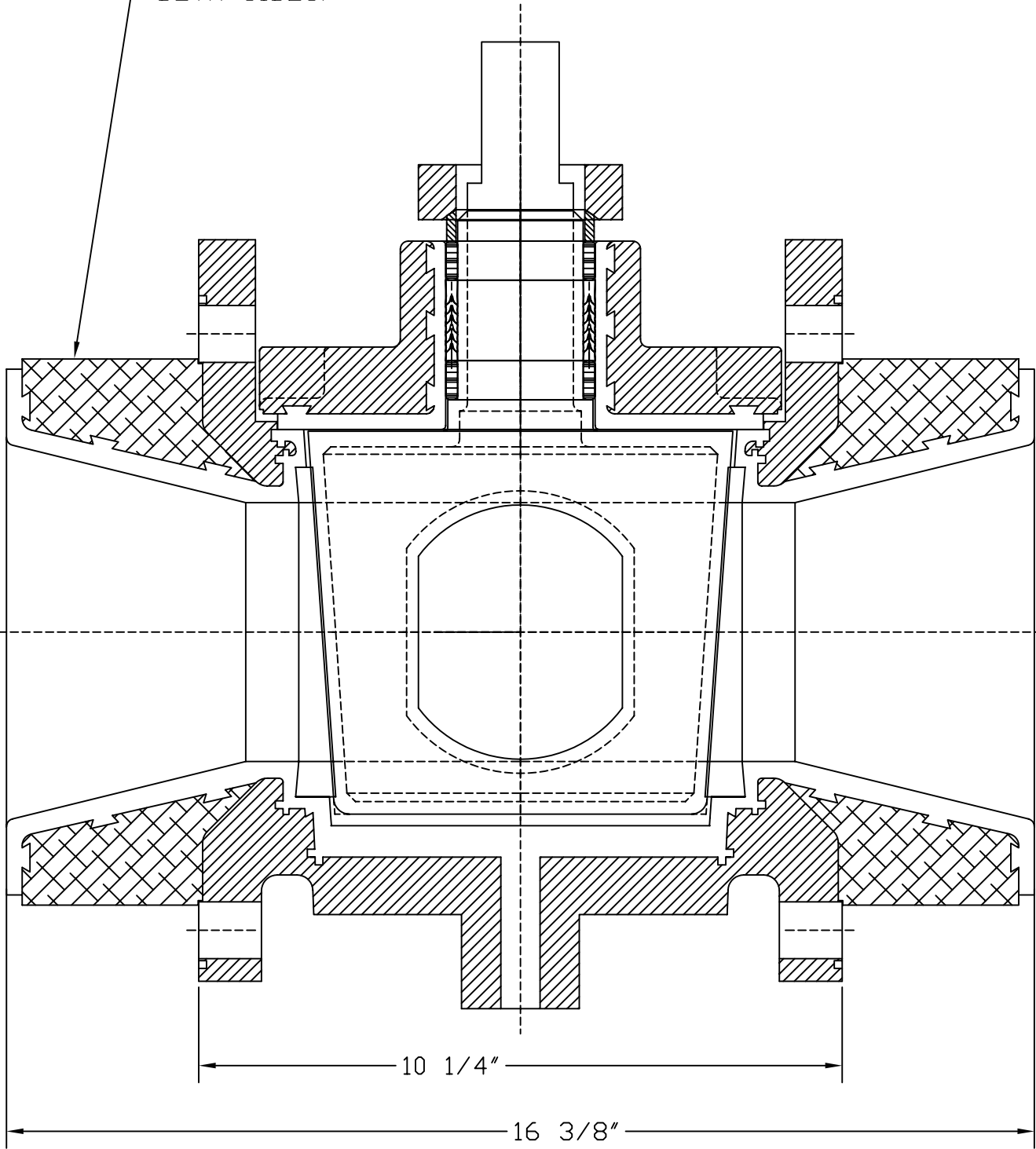


STEEL EXTENSION RINGS
BOTH SIDES.



No.	Revision	Description	Date	Chk'd

This drawing shall not be reproduced, copied, lent, disclosed, published, or disposed of, directly or indirectly, nor used for any purpose other than that for which it was specifically furnished

ChemValve, Inc.
Spring, Texas

Model Number		6"-790-150 DIA. FACE-TO-FACE ASSEMBLY	
Drawn: B.K.	Part Name		
Checked:	6"-790-150 DIA.F-F-ASSEM.		
Approved: B.K.	Drawing Number	Rev.	
Date: 1-4-00	067915 DIA.F-F-ASSEM.		